

Specification  
of  
Photovoltaic module

Type KC120

Feb.17.2005

Prepared by *P. Nakashima*

Checked by *M. Hirota*

Checked by *S. Minami*

Approved by *H. Hirayama*

Kyocera Corporation

Kyoto, Japan

## Specification of photovoltaic module

### 1. Application

This specification is applicable for a photovoltaic module KC120.

### 2. Electrical specification

Maximum power	(Pmax)	:	1 2 0 W + 1 0 / - 5 %
Test condition		:	Cell temperature 2 5 °C Irradiance AM 1. 5, 1 k W / m <sup>2</sup>

### 3. Nominal characteristics

Maximum power	(Pmax)	:	1 2 0 W
Short circuit current	(Isc)	:	7. 4 5 A
Open circuit voltage	(Voc)	:	2 1. 5 V
Maximum power current	(Ipmax)	:	7. 1 0 A
Maximum power voltage	(Vpmax)	:	1 6. 9 V
Maximum system voltage		:	7 5 0 V
Test condition		:	Cell temperature 2 5 °C Irradiance AM 1. 5, 1 k W / m <sup>2</sup>

### 4. Physical specification

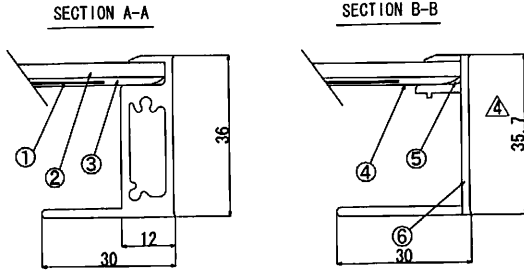
Drawing. No.	AC - 5 6 2 0 0 2 - 4
Dimension	9 6 2 × 9 6 7 × 5 6 mm
Mass	1 1. 9 kg

### 5. Attachment

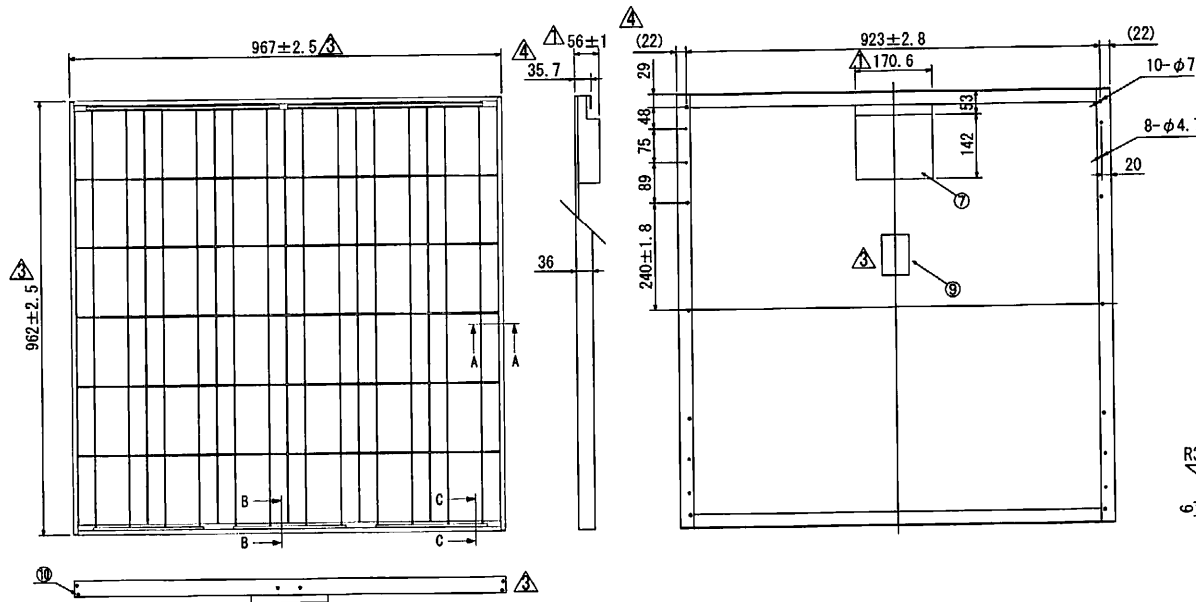
Cable Clamp 2 pcs.

### 6. Remarks

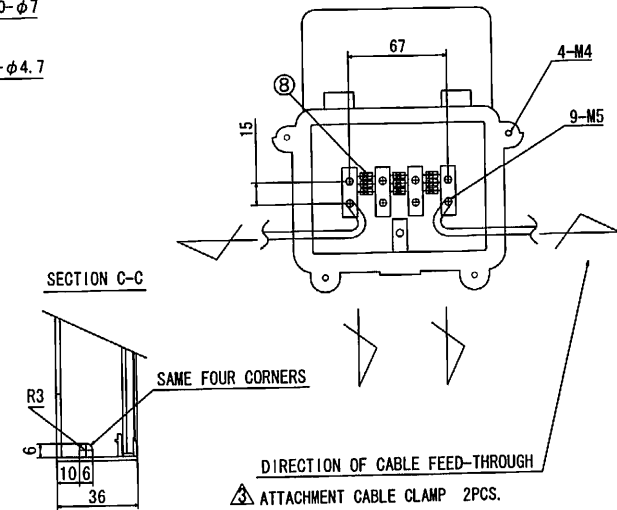
- ① Do not get on the top of module to avoid unexpected damage on it.
- ② Do not keep the module under the hot/humid circumstances to avoid visual problem on module.



No.	DESCRIPTION	QT.	MTL.	REMARKS	No.	DESCRIPTION	QT.	MTL.	REMARKS
①	SOLAR CELL	36	SI	PSC150	⑥	FRAME	1 S.	Al	△ -
②	GLASS	1	△ -	LOW-IRON TEMPERED	⑦	JUNCTION BOX	1 S.	PPE	USABLE CABLE 6-8mm
③	POTTANT	1 S.	EVA	△ -	⑧	BY-PASS DIODE	3 S.	△ -	△ -
④	BACK SHEET	1	△ PET	WEATHER-RESISTANT	⑨	LABEL	1	PET	△ -
⑤	BUTYL	1 S.	△ -	△ -	⑩	T. P. SCREW	10	SUS	△ -



DETAIL OF JUNCTION BOX



TOLERANCE LIST (mm)	
DIMENSION	TOLERANCE (±)
~ 6	0.3
6 ~ 30	0.5
30 ~ 120	0.8
120 ~ 315	1.2
315 ~ 1000	2.0
1000 ~	2.5

SCALE	FREE	NAME	△ PHOTOVOLTAIC MODULE
TOLERANCE	REFER TO TOLERANCE LIST	DATE	
DATE	1995. 11. 18	TYPE	KC120
		DWG. NO.	AC-562002-△4